



北京顺义国际学校  
INTERNATIONAL SCHOOL OF BEIJING

# Elementary New Family Orientation

*January 2, 2023*





# EMPOWERED WITH PURPOSE AND COMPASSION



inspiring

international

community

Beijing

thinkers

leaders

serve others

find their place  
in the world

strong  
relationships

high  
expectations  
together

challenging and  
joyful learning

freedom to  
explore

We are an inspiring international community in Beijing, where thinkers and leaders find their place in the world and serve others. So that our learning is at its best, we build strong relationships and set high expectations together. We are committed to challenging and joyful learning with the freedom to explore.



# Welcome from the ES Leadership Team



**Dr. Dustin Collins**  
Elementary School Principal



**Sally Hill**  
LES Assistant Principal  
(EY3 – Grade 2)



**Heather Densley**  
UES Assistant Principal  
(Grade 3 – Grade 5)

# ES Counselors



**Coco Liu**  
EY3 and EY4  
Kindergarten Grade 1



**Elizabeth Daley**  
Grade 2  
Grade 3



**Daniel Chaney**  
Grade 4  
Grade 5



# ES Priorities

- Challenging and Joyful Learning
- Lifelong Peer to Peer Relationships





# Priority: Challenging and Joyful Learning

*Science of Reading/Reading  
Across the Curriculum*

*All teachers are  
reading/language teachers*





# Priority: Life-long Peer to Peer Relationships

- *SEL action plan*
- *Cooperative learning strategies*
- *Purposeful translanguaging*
- *Structured activities*







# Social & Emotional Framework

*Every student, every teacher, every day*

## Purposeful Action

The ability to:

- Act in purposeful ways that serve others
- Promote the wellbeing of ourselves, others, and of the planet

## Social and Cultural Competence

The ability to:

- Empathize with the perspectives and identities of others and interact positively with diversity
- Recognize inequity and bias

## Nurturing Relationships

The ability to:

- Establish and maintain healthy relationships
- Cooperate with others and navigate conflict constructively

## Self Awareness

The ability to:

- Recognize one's own emotions, values, and identities
- Accurately assess one's strengths and limitations, with a well-grounded sense of confidence and a growth mindset

## Self Management

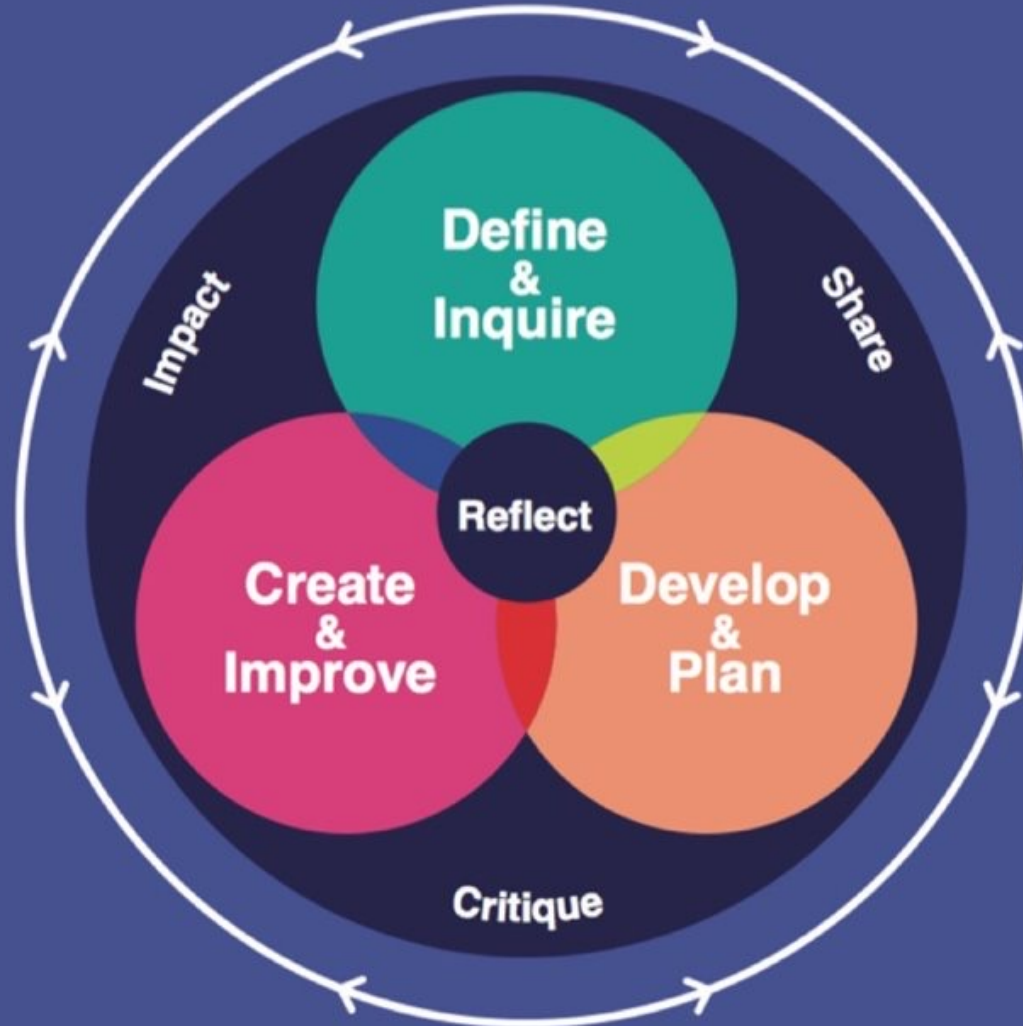
The ability to:

- Honor and manage a range of one's own emotions and thoughts
- Skillfully use them to inform healthy choices



# The ISB Design Process

- How can your design have a positive impact on real people & the world?
- Make a product
- Improve and refine your design through testing & feedback



- What is the problem?
- Who is affected?
- What do you need to know to get started?
- Sketch, plan & communicate ideas to yourself & others



# Key Points

- Care for your child's safety and well-being are one of our top priorities
- Inquiry and problem-solving approaches build the foundation for nurturing confident learners and independent individuals
- At ISB we believe that children's learning will be enriched by learning about our host country China and in two languages
- The ISB Monolingual Program and Dual Language program offer the same curriculum content

# Student Support Services

- Director of Student Support Services
- Counselors
- English as an Additional Language (EAL)/DL Support Teachers
- Learning Support
- Speech & Language Pathologists
- Nurses



# School-Home Partnership

- A strong relationship founded on trust and open communication
- Parent involvement
- Principal Coffees
- Parent sessions and workshops



# Communication

- ES Principal Team and messages from your child's homeroom teacher
- SeeSaw – student e-portfolio, family announcements
- ISB Weekly
- Dragons' Gate/ISB Website
- Parent Coffees & Workshops
- Student Planner/Take home folder
- Conferences & Report Card
- ISB WeChat Channel
- Social Media





# Communications@ ISB *announcements, news and updates*



**ISB Weekly**

Thursday at 3:00 pm



**HoS Monthly**

First Monday



**WeChat**

Friday at 3:00 pm



# WeChat Guidelines

## WeChat Guidelines for ISB Community

ISB recognizes the use of WeChat groups at grade level/homeroom as a useful tool to share information relevant to the respective groups. These channels are not managed or monitored by ISB. The information generated here is entirely parent-generated, unless an ISB WeChat post is shared by a member.

Whilst these groups are not official ISB groups, as the membership consists of ISB parents, we ask that these groups also follow the school's guidelines below:

- Only ISB parents should be added to WeChat groups. Phone numbers/IDs should not be shared without permission.
- Please do not make personal, disrespectful or inflammatory comments about any members of the ISB community (students, parents, staff, service providers and faculty).
- Please respect the privacy of our community. Some families have requested that their children's photo is not used. Please do not share photos or videos of students where they are identifiable.
- Parents should always seek official information directly from ISB. Please refer to Dragons' Gate, ISB Weekly etc.
- Any school concerns/grievances should be shared directly with the relevant ISB department. Please see Dragons' Gate for contact details.
- We respectfully request these guidelines are followed for any ISB community- related groups.

## ISB社区微信使用准则

ISB承认微信是各年级和班级分享相关信息的实用工具。微信渠道不受ISB管理或监控。除了ISB微信公众号发出来的内容被家长分享，此群中其它的信息完全来自于家长。

虽然家长微信群不是ISB的官方群，其成员主要由ISB的家长组成，因此我们要求这些微信群成员也必须遵守学校的以下准则：

- 仅限ISB家长加入微信群。未经许可不得分享电话号码/微信ID号。
- 请勿针对ISB社区中的任何成员(包括学生、家长、工作人员、服务供应商和全体教员)发表不尊重或煽动性评论。
- 请尊重我们社区的隐私。一些家庭要求不得使用他们孩子的照片,请不要分享可以识别的学生照片或视频。
- 家长应始终直接从ISB获取官方信息, 请参考Dragons' Gate、ISB Weekly等。
- 任何与学校有关的问题/投诉应直接告知ISB相关部门。请参阅Dragons' Gate了解详细的联系方式。
- 我们诚恳要求与ISB有关的所有社区群体遵守以上使用准则。

## ISB 커뮤니티용 WeChat 지침

ISB는 각 그룹과 관련된 정보를 공유하는 데 유용한 도구로서 학년/홈룸(교실)에서 WeChat 그룹을 사용하는 것을 허용합니다. 이러한 채널은 ISB에서 관리 또는 모니터링을 하지 않습니다. 여기에서 생성된 정보는 ISB WeChat 게시물이 회원에 의해 공유되는 경우를 제외하고, 전적으로 부모가 생성하는 것입니다.

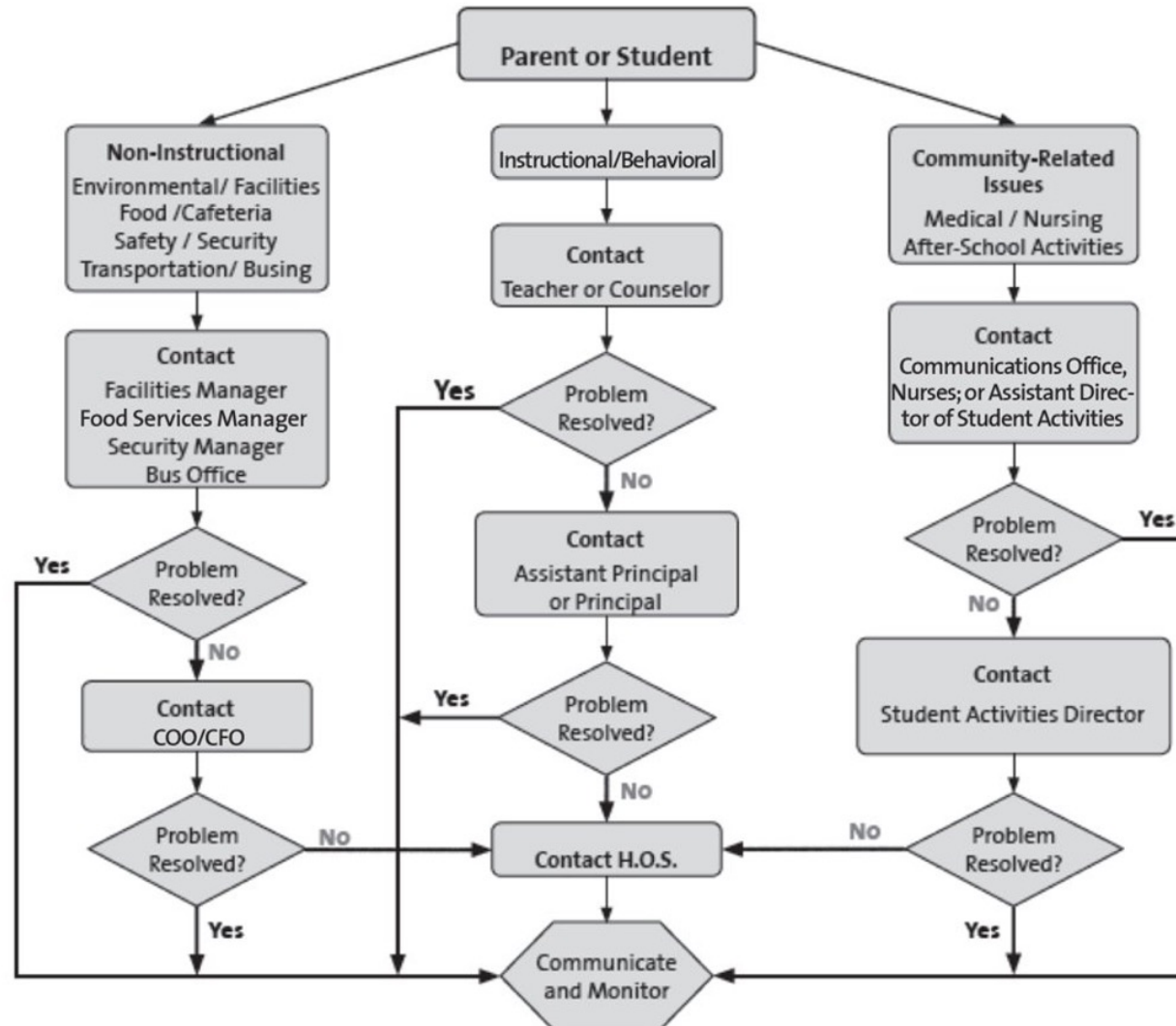
이 그룹은 공식 ISB 그룹이 아니지만 멤버십이 ISB 부모님들로 구성되어 있으므로 아래의 학교 지침을 준수해야 합니다.

- ISB 부모님들만 WeChat 그룹에 추가할 수 있습니다. 전화번호/ID는 개인의 권한 없이 공유할 수 없습니다.
- ISB 공동체 구성원(학생, 학부모, 교직원, 서비스 제공업체 및 교수)에 대해 개인적이거나 무례하거나 선동적인 발언을 하지 마십시오.
- 우리 공동체의 사생활을 존중해 주십시오. 일부 가족들은 자녀의 사진을 사용하지 않을 것을 요구했습니다. 학생의 사진이나 동영상 상 신원을 알 수 있는 곳에 공유하지 마십시오.
- 학부모는 항상 ISB의 공식 정보만을 찾아야 합니다. Dragons' Gate, ISB Weekly 등을 참조하십시오.
- 학교와 관련된 모든 문제 및 고충은 관련 ISB 부서와 직접 공유해야 합니다. 자세한 연락처는 Dragons' Gate를 참조하십시오.
- 위에 제시된 학교 지침은 어떠한 ISB 커뮤니티와 관련된 그룹 활동에서 반드시 준수할 수 있도록 정중하게 부탁드립니다.





# Chain of Communication Guidelines



How will you learn about the progress your child is making?

## **Reporting Practices**

# Reporting Practices

How will you learn about the progress your child is making?

When	What	How
<b>November</b>	Formal	Student as a Learner (SAL) progress report
<b>November</b>	Formal	Parent-Teacher Conference
<b>February</b>	Formal	Student as a Learner (SAL) <i>and</i> full academic report card and narrative
<b>April</b>	Formal	Student-Led Portfolio Conference <i>and</i> student reflection
<b>June</b>	Formal	Student as a Learner (SAL) <i>and</i> full academic report card and narrative
<b>Ongoing</b>	Informal	Feedback from teachers: student work, email, telephone, face to face, note, etc.



# The School Day

- Arrival: 8:00 am – 8:10 am
- Morning Meeting 8:15 am
- Dismissal: 3.25 pm (2:25 pm on Wednesday)  
(11:30 am Early Years on Wednesday)
- 6-Day Cycle
- Morning recess and lunch/recess time
- Attendance - email teacher, ES Office and transportation office in case of an absence



# Sample Schedule

	Day A	Day B	Day C	Day D	Day E	Day F
8:10 - 8:15	Attendance Check					
8:15 - 8:45	Morning Meeting-Social Emotional Learning					
8:45 - 9:35	Reading	Reading	Reading	Reading	Reading	Reading
9:35-9:55	Recess					
9:55 - 10:40	PE	Math	Phonics	Math	Math	PE
10:40 -11:25	Math	Performing Arts	Math	Visual Arts	Writing	Math
11:25 - 12:10	Science/Social Studies	Writing	Science/Social Studies	Writing	Visual Arts	Science/Social Studies
12:10 - 1:10	Lunch & Recess					
1:10 - 1:55	Chinese	PE	Chinese	Performing Arts	Chinese	Phonics
1:55 - 2:40	Phonics	Chinese	Writing	Chinese	Phonics	Chinese
2:40 - 3:25	Structured Play	Phonics	Structured Play	Phonics	Library	Structured Play

# Elementary School Library

## Cybrarians

- Bec Taylor: EY3 – Grade 1
- Paul Wong: Grades 2 – 5

## Borrowing Guidelines: two weeks

- LES: three (3) books
- UES: five (5) books
- Parents: five (5) books per parent ID card





# Outdoor Learning Environment (OLE) and Dragon's Lair Experience (DLE)

- Morning Recess
- Lunch Recess
- Dismissal

There is a QR Code for parents to scan to update the office about any change in how a child is going home.

Students must be picked up from the ES Office if leaving school early.

Students are expected to leave campus at dismissal time.



# Air Quality Index (AQI): Shunyi

Apps and websites provide information and forecasts, which are used to make informed decisions.



**AirVisual Air Quality F...**

Global air pollution AQI PM...

★★★★★ 10.7K

**OPEN**

# Student Well-being – Social, Emotional, Physical

- Friendships and Play
- Importance of Sleep
- Home learning



# ES CO-CURRICULAR ACTIVITIES @ ISB

**ASA PROGRAM  
DRAGON ES SPORTS  
ES PERFORMING ARTS**

**WHERE TO FIND ALL THE  
INFORMATION?  
DRAGON'S GATE – CO-CURRICULAR  
PAGE**

## **KEY CONTACTS:**

General Enquiries: [activities@isb.bj.edu.cn](mailto:activities@isb.bj.edu.cn)

ASA Enquiries: [awang01@isb.bj.edu.cn](mailto:awang01@isb.bj.edu.cn)



# SOME KEY INFORMATION!

## **After School Activities (ASA) Program** (Grades 1-8 Session 1/ Grades K-8 Sessions 2+3)

3 ASA Sessions this school year

Session 1 Registration – September 12-19, 2022

Session 1 Starts – September 26, 2022

*Registration for these programs will take place online on SchoolsBuddy - detailed instructions will be shared with all parents via email.*

## **ES Performing Arts**

ES Strings – Grades 3-5

ES Choir – Grades 2-5

ES Band – Grades 4-5

*Registration for these programs will take place online on SchoolsBuddy - detailed instructions will be shared with all parents via email.*

## **Dragon Olympics** (mostly for students in Grades 3-5)

Lunchtime practices (sports rotate throughout the year: cross country, soccer, handball, badminton and table tennis) - soccer and cross country are up first!

Participation in International School Athletics Conference (ISAC) events

Information will be shared with all parents via email and directly with students through their PE teachers

## **ISB Swim Academy** (Grades 2-12)

Please head to the Co-Curricular page on Dragon's Gate, click on **Aquatics**, read the information regarding entry into the Swim Academy, and if you would like to try out, follow the instructions and click on the link as a **New Swimmer!**



# Contacts

## Safety and Health-related questions

Email the ISB Nurse offices and should be addressed in English, please.

[ESNurses@isb.bj.edu.cn](mailto:ESNurses@isb.bj.edu.cn)

## Elementary School-specific questions

ES Office: [ESOffice@isb.bj.edu.cn](mailto:ESOffice@isb.bj.edu.cn)

Ms. Sally Hill, ES Assistant Principal, EY3 – Grade 2: [shill@isb.bj.edu.cn](mailto:shill@isb.bj.edu.cn)

Ms. Heather Densley, ES Assistant Principal, Grade 3 – Grade 5: [hdensley@isb.bj.edu.cn](mailto:hdensley@isb.bj.edu.cn)

Dr. Dustin Collins, ES Principal: [dcollins@isb.bj.edu.cn](mailto:dcollins@isb.bj.edu.cn)